



CLASS 5 to CLASS 4 ADAPTER (CL5F-CL4M ADAPTER)

THE TOOL

The Blakemere Torque Tool Adaptor can be connected and disconnected from the nose of a Blakemere Class 5 Torque Tool. This allows the Client to reduce the number of operational and contingency Torque Tools necessary for certain scopes of work.

The adapter allows up to Class 5 torque values to be applied to Class 4 interfaces where deemed necessary due to over-torquing and marine growth / calcification.

Torque Tool Adapters can be tailored to overcome problems presented by subsea interfaces that may fall outside ISO configuration e.g. when an over or under length actuator shaft prevents successful mating with the Torque Tool nose or a custom interface has been manufactured and installed subsea

TECHNICAL SPECIFICATIONS

WEIGHTS & DIMS

- Equipment weight (in air): 23 kg (approx.)
- Equipment weight (in seawater): 16 kg (approx.)
- Equipment dimensions L x W x H: 400 x 350 x 350 mm

OTHER SPECIFICATIONS

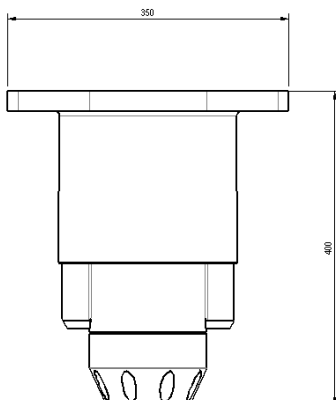
- Max. input Torque: 6,800 Nm
- Input interface: ISO13628-8 Class 5 Female
- Input interface: ISO13628-8 Class 4 Male
- Depth rating: unlimited



DATA SHEET ///
CL5F-CL4M ADAPTER

GA DRAWING

Critical dimensions are displayed below. Further details can be provided upon on request.



For more information contact Blakemere:

info@blakemere.com.au
+61 (08) 9373 1300

